

STUDIO I - FALL 2012

INSTRUCTOR
Clare Brown

PROJECT

Exhibition Concept Design Package: *Candace Wheeler Exhibition*.

CONSTRAINTS

Space Constraints: Use of existing exhibition gallery space at the Smithsonian American History Museum.
Ceiling height limited to 13 feet.

Content Constraints: Placement of 84 objects previously curated for this exhibition, held at the MET.

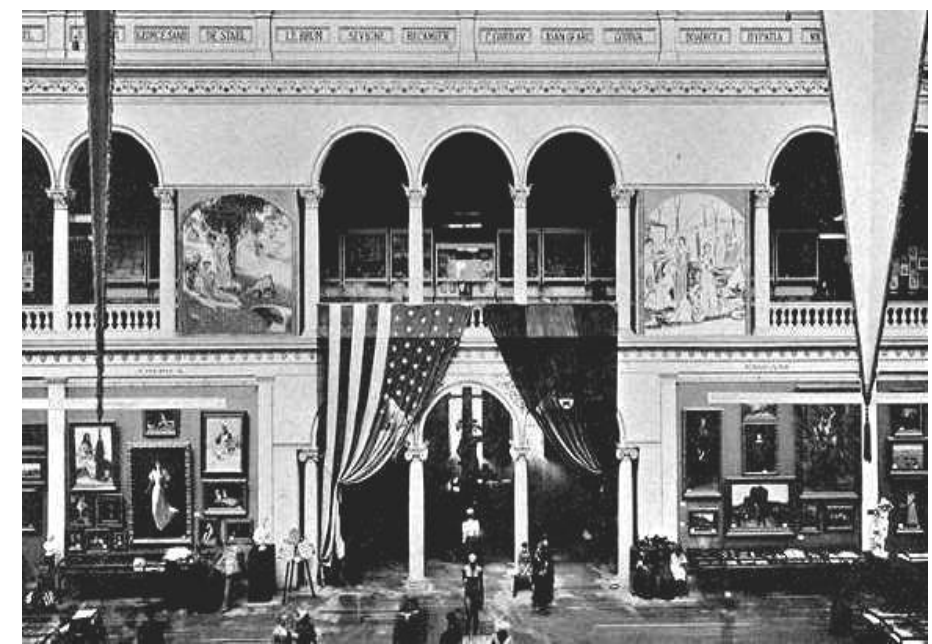
CONCEPT

Gallery design is inspired by the Women's Building at the Columbian Exposition (1893), Chicago.

The creation of nook galleries around the exhibition perimeter significantly increased wall space to accommodate all of the objects.



ISOMETRIC FINAL INSTALLATION VIEW



ARCHITECTURAL INSPIRATION



INSTALLATION RENDERING



EXHIBITION POSTER

The Woman's Building at the World's Columbian Exposition 1892 - 93

The other important project of that ardent time in Wheeler's life was directing the interior design of the Woman's Building at the World's Columbian Exposition in Chicago. The Exposition, timed to commemorate the four-hundredth anniversary of Columbus's discovery of America, was intended to be the largest international exhibition ever. It was the last major world's fair of the century held in America. Although Wheeler's work and opinions had been published in national journals, until this time she had been an important figure primarily in the New York art world. With her participation in the Woman's Building at the World's Columbian Exposition, her talents gained a nationwide reputation.



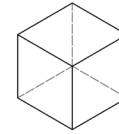
Woman's Building, from Maud Howe Elliott, ed., *Art and Handicraft in the Woman's Columbian Exposition*, Chicago, 1893.

In spite of the trials that she had undergone as color director of the Woman's Building, Wheeler later looked back with satisfaction on the triumph of all those involved: *"As I go back to the days of the Columbian Exhibition and remember the Woman's Building as finished and standing its own beauty beside the great lake, I can see how small were the obstacles compared to the result."*



Interior, Woman's Building, Central Atrium, World's Columbian Exposition, Chicago, ca. 1893, Chicago Historical Society

SAMPLE TEXT PANEL



STUDIO III - SPRING 2013

INSTRUCTOR

Philip Brady and Andrew Petitti

PROJECT

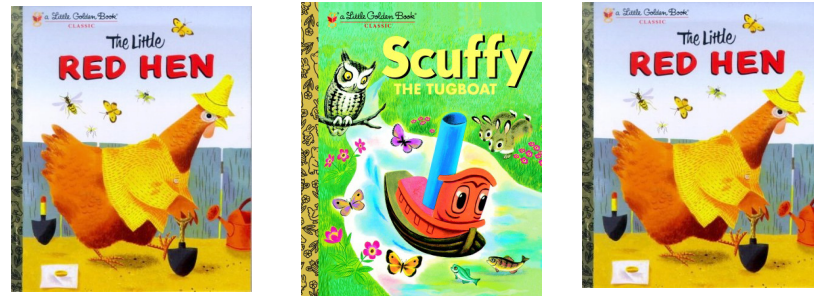
Entrance Concept: *Little Golden Books Exhibition*;
Casework and Book Display.

CONSTRAINTS

Space Constraints: Use of the Albert H. Small Documents
Gallery at the American History Museum, Smithsonian
Institution.

CONCEPT

Entrance treatment to appear as an open Little Golden
Book, with images of popular editions seen between the
pages. The design is Mid-Century inspired- which is the
time when these books became popular.



OBJECT SAMPLES-
LITTLE GOLDEN BOOKS



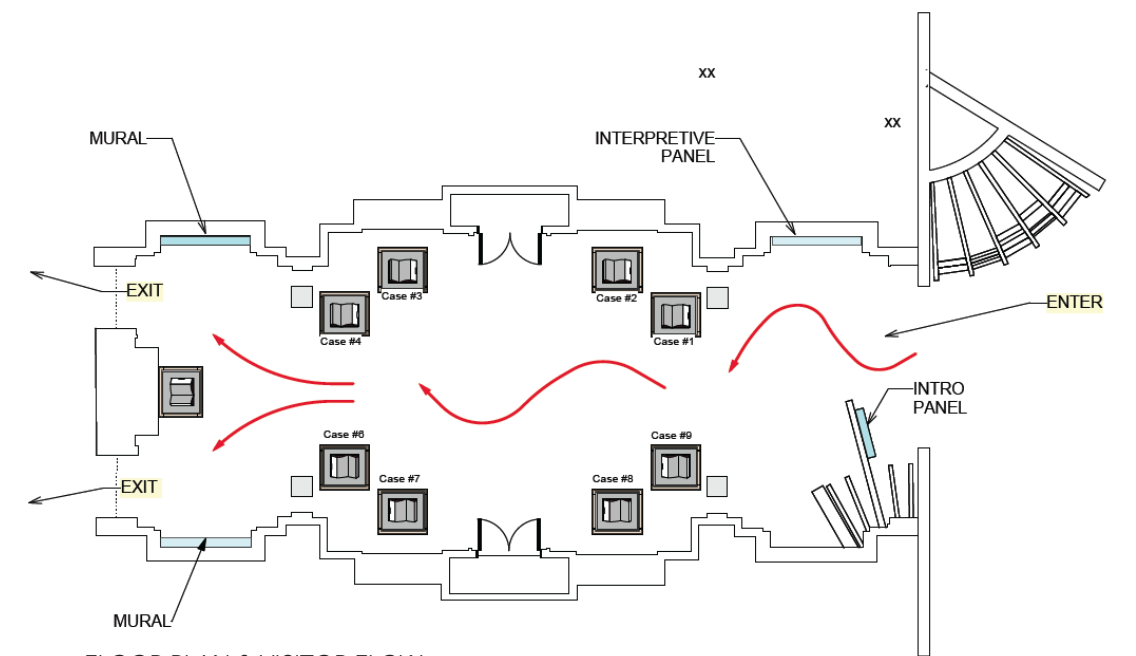
ENTRANCE TREATMENT



MID-CENTURY INSPIRATIONS



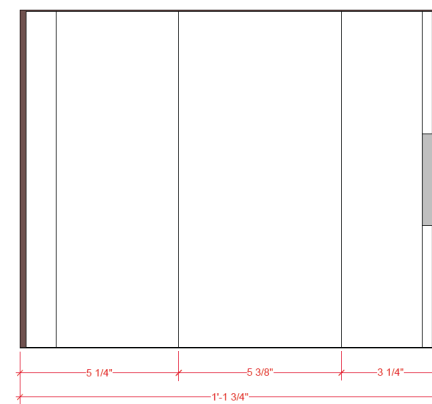
ELEVATION VIEW



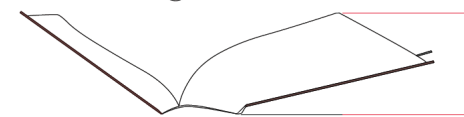
FLOOR PLAN & VISITOR FLOW



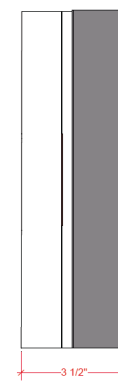
RENDERED CASEWORK - SIDE VIEW



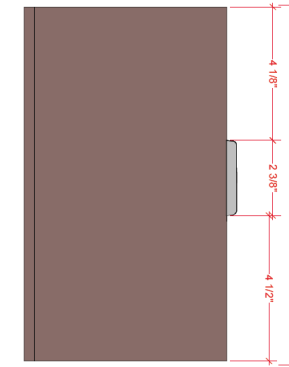
1 OPEN BOOK TOP VIEW
Sht. 14 Scale: Half Actual Size



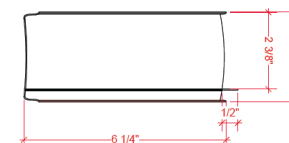
3 OPEN BOOK FRONT VIEW
Sht. 14 Scale: Half Actual Size



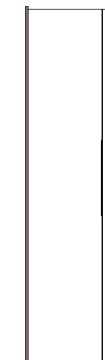
2 OPEN BOOK SIDE VIEW
Sht. 14 Scale: Half Actual Size



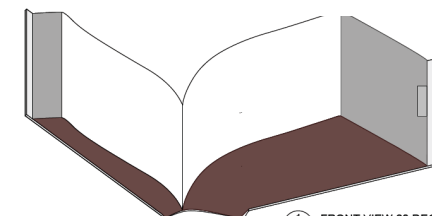
1 FLAT BOOK TOP VIEW
Sht. 13 Scale: Half Actual Size



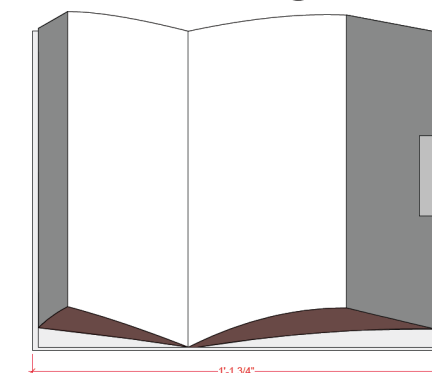
3 FLAT BOOK FRONT VIEW
Sht. 13 Scale: Half Actual Size



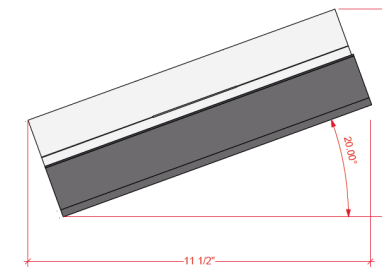
2 FLAT BOOK SIDE VIEW
Sht. 13 Scale: Half Actual Size



1 FRONT VIEW 20 DEGREE ANGLE
Sht. 12 Scale: Half Actual Size

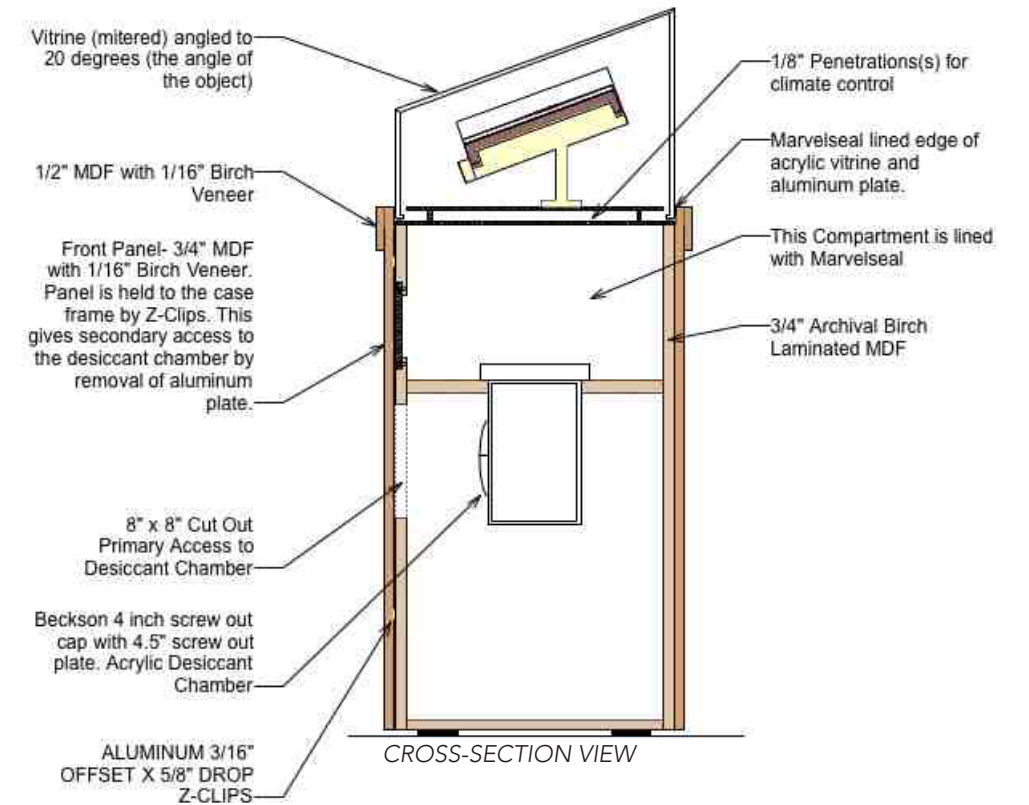
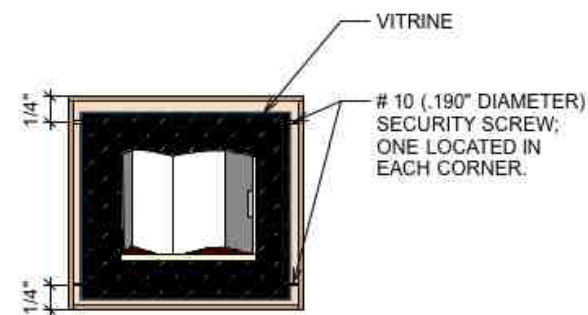
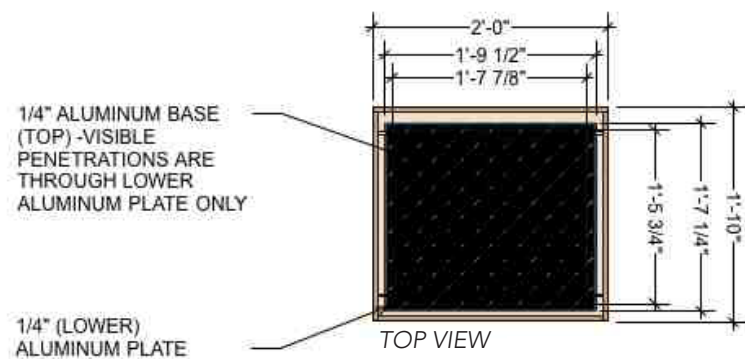
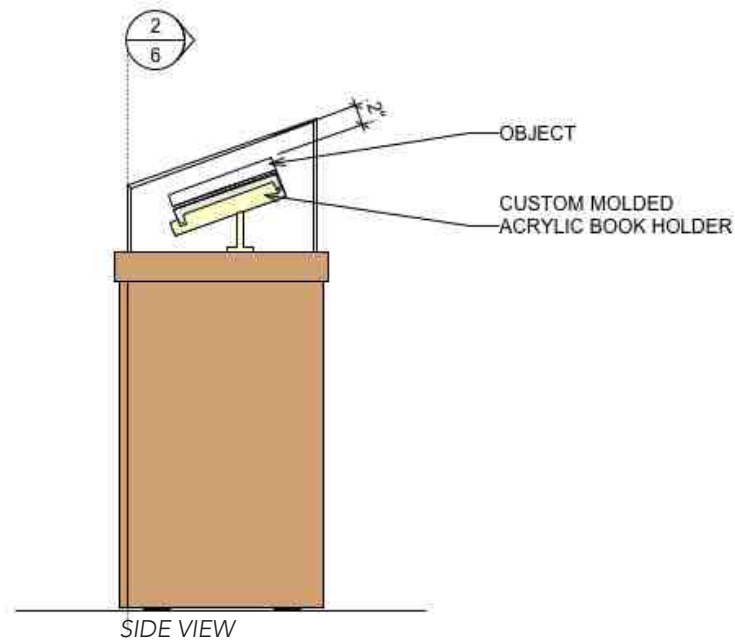
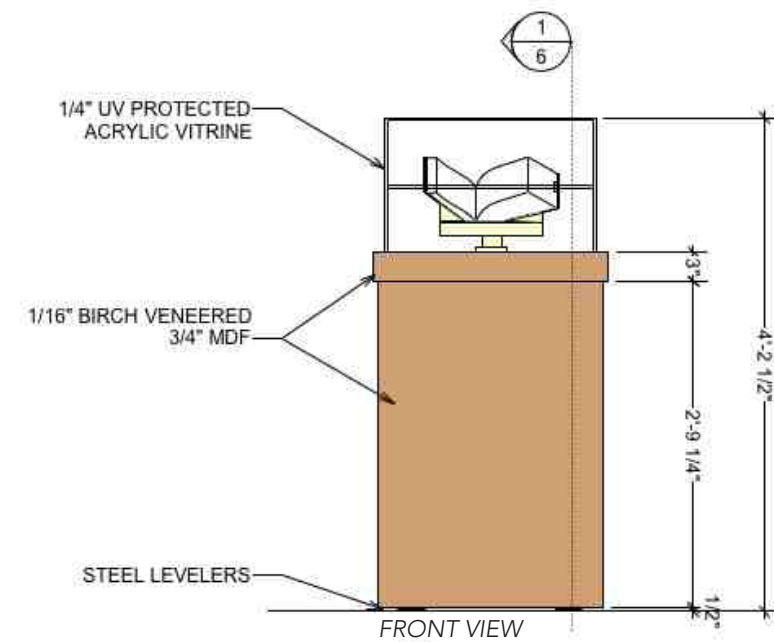


3 TOP VIEW 20 DEGREE
Sht. 12 Scale: Half Actual Size



2 SIDE VIEW 20 DEGREE ANGLE
Sht. 13 Scale: Half Actual Size

BOOK DRAWINGS (VECTORWORKS)



EXHIBITION CASEWORK